

## WMVS-DT / WMVT-DT / MATC TVP Student Remote Microwave Truck Specifications



**Vehicle:**

Ford E350 Van  
Overall Length 23' Height 12' 6",

**Digital Encoders / Analog Modulators**

1-Tandberg 5780 Encoder HD & SD  
Digital Encoders 4:2:0 / 4:2:2

**Receivers:**

1 -Stellar Labs ATSC tuner.

**2 & 7 GHz Microwave System:**

**NuComm Newscaster VT-2, 2/7GHz VSB, COFDM, Transmitter**

**Portable HD / SD Microwave Packages:**

NuComm 2/7 GHz VSB, COFDM, or Analog Microwave Relay System (HD Available By Request)

**Video Switching:**

NewTek TC1 Tricaster

**Cameras:**

Panasonic or Sony EFP cameras

**Video**

AJA FS2 HD Cross converter/Frame Sync

**Record and Playback**

2 -AJA KiPro Rack

**Audio**

Soundcraft Expression Si Mixer with remote fiber stage box.  
Wohler AMP1 Audio Monitor

**Communications**

Clearcom MS-704, 4-Channel Intercom unit  
4 - Clearcom Belt Packs, Beyer DT108 Single Muff Headsets and Beyer DT109 Dual Muff Headsets  
Studio Technologies, IFB+ Unit with two beltpacks and earbud kits.  
2 - AT&T Wireless phone interface (Intercom and IFB interconnections)  
Clearcom, AC-10H Interface. Telephone interconnect  
Two Way Radio Base Station with additional handheld units (Available By Request)

**Video Monitoring**

Oscee Dual HD/SD monitor  
Blackmagic Design Dual monitor



**Contact Information:**

**Rentals:**

Dan Broavac  
(414) 297-7553  
(414) 271-1036

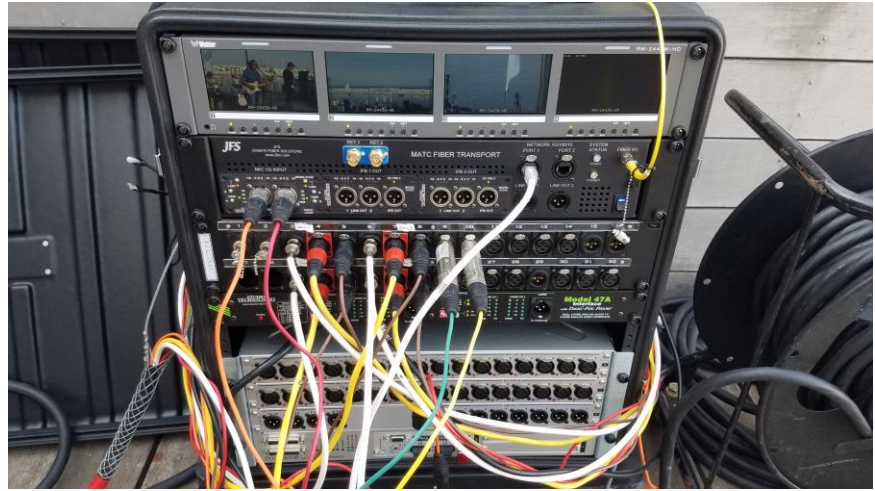
**Technical:**

David Schank  
(414) 297-8028  
(414) 704-7470

## WMVS-DT / WMVT-DT / MATC TVP Student Remote Microwave Truck Specifications

### Fiber Interconnect System

Joesph Electronics fiber interconnect  
4 – HD/SDI from house unit  
2 – HD/SDI return from van  
6 – Line audio from house unit  
2 - Studio Technologies Mic/line preamps  
2 – Studio Technologies IFB  
Studio Technologies Model 47a 2 to 4 wire intercom.  
1- Soundcraft 32 X 16 Fiber Stage Box  
2- Ethernet connections



### Cable

4 - 125 ft. Snake (2 Video & 3 Audio, 16 Gage DC). Other cables available upon request.  
TAC 6 Fiber 1000FT  
1- AJA Fido TX and RX

### Power

Onboard 4KW Honda Generator  
External power 120V single phase 30 Amp Hubbell twist lock.  
Power Cable 95FT 240V Single Phase

### Contact Information:

**Rentals:**  
Dan Broavac  
(414) 297-7553  
(414) 271-1036

**Technical:**  
David Schank  
(414) 297-8028  
(414) 704-7470